

<b>FABRIC ROLL SIZE:</b>
27.3 YARDS
6.5 YARDS

**PHYSICAL PROPERTIES**

**Content:** 100% Fire Resistant, Acoustic Sound Absorbing Polyester Fibers with Patented Snowsound Technology

**Backing:** Unbacked

**Width:** 118" // 300 cm (tolerance + 0 - 3 cm)

**Weight:** 12.5 oz per square yard / 41.1 oz per linear yard

**Thickness:** 1.7 mm

**ACOUSTIC PERFORMANCE AND NOISE REDUCTION RATING**

**Absorption Coefficient and NRC:**  
 Class A- NRC between 0.64 -1.0 depending on installation.  
[Please refer to on-line technical sheets for details.](#)

**PERFORMANCE**

**Flame Resistance:**  
 Passes NFPA 701 // NFPA 260 // CAL. TB 117 // UL 723 Class A // ASTM E 84 Class A

**Environment:**  
 100% Recyclable and GREENGUARD GOLD Certified

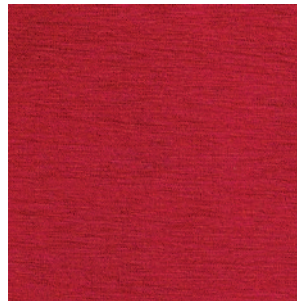
**Abrasion Resistance:**  
 65,000 rubs /cycles (tested according to Martindale Method)

**Colorfastness to Light:**  
 Grade 6/7 - "Excellent" (Passes AATCC 16 / ISO 105-B02:2014)

**Colorfastness to Wet and Dry Crocking:**  
 Wet & Dry - Grade 5 (Passes AATCC 8 / ISO 105-X12: 2016)

**Propensity to Surface Fuzzing and Pilling:**  
 Grade 5 - "no change" (Passes ISO 12945-2:2002)

**Washing and Maintenance:**  
 Normal machine washing up to 86 degrees Fahrenheit. Ironing on low heat acceptable. Dry cleaning is acceptable (any solvent except Trichloroethylene). Do not tumble dry.



Red (6.5 yd) 7F6-6-600  
 Red (27.3 yd) 7F6-25-600



Coffee Brown (6.5 yd) 7F6-6-601  
 Coffee Brown (27.3 yd) 7F6-25-601



Black (6.5 yd) 7F6-6-602  
 Black (27.3 yd) 7F6-25-602



Teal (6.5 yd) 7F6-6-603  
 Teal (27.3 yd) 7F6-25-603



Beige (6.5 yd) 7F6-6-604  
 Beige (27.3 yd) 7F6-25-604



Cream (6.5 yd) 7F6-6-605  
 Cream (27.3 yd) 7F6-25-605



Powder Pink (6.5 yd) 7F6-6-606  
 Powder Pink (27.3 yd) 7F6-25-606



Medium Gray (6.5 yd) 7F6-6-607  
 Medium Gray (27.3 yd) 7F6-25-607



Forest Green (6.5 yd) 7F6-6-608  
 Forest Green (27.3 yd) 7F6-25-608



Powder Blue (6.5 yd) 7F6-6-609  
 Powder Blue (27.3 yd) 7F6-25-609



Mustard Gold (6.5 yd) 7F6-6-610  
 Mustard Gold (27.3 yd) 7F6-25-610



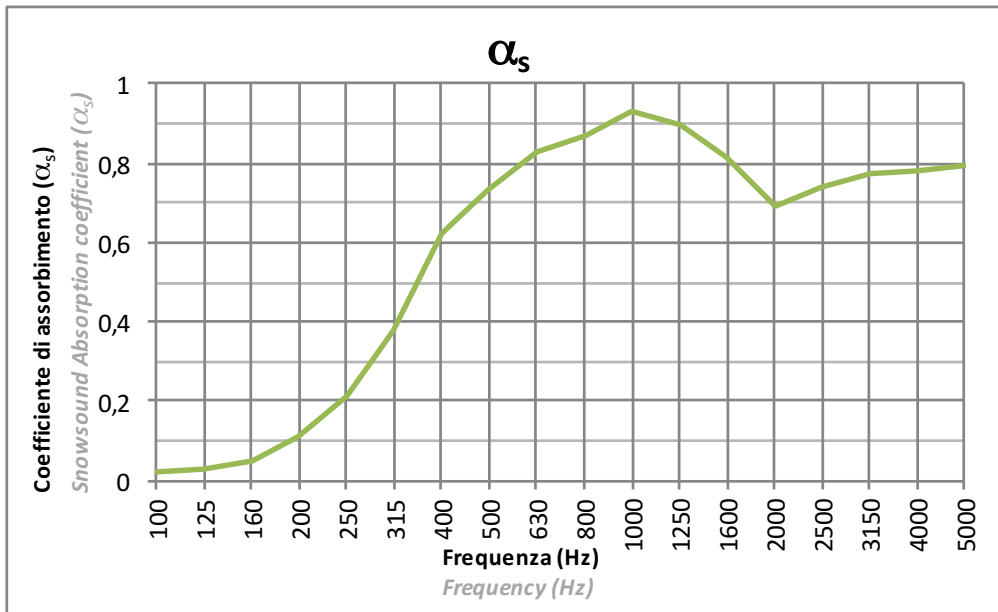
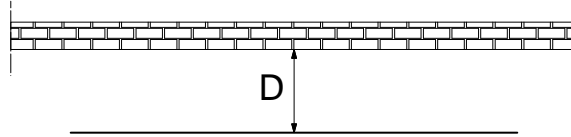
Navy Blue (6.5 yd) 7F6-6-611  
 Navy Blue (27.3 yd) 7F6-25-611

# SNOWSOUND-FIBER 6

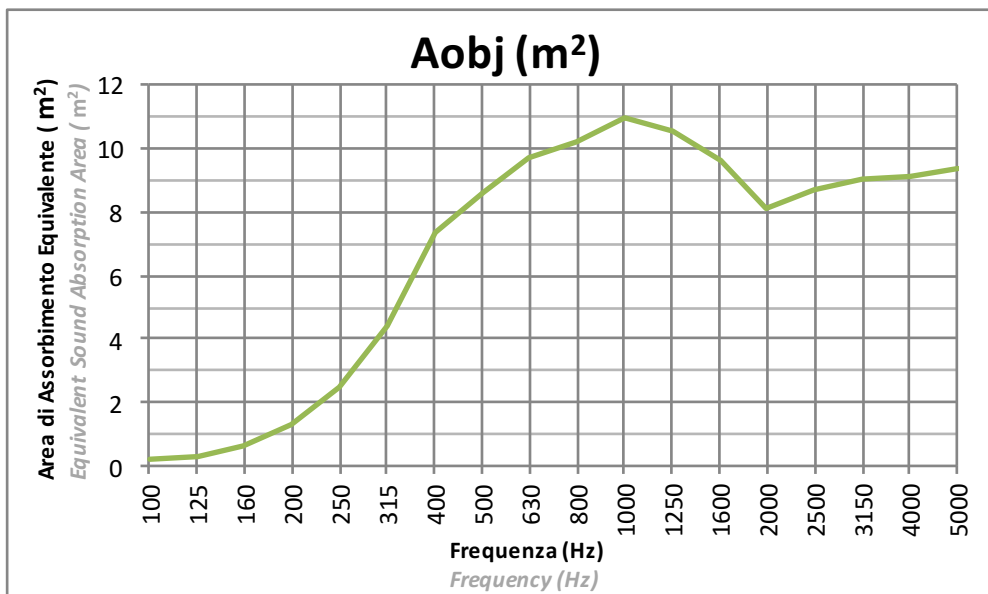
Tessuto: PLANARE  
Fabric: FLAT

Installazione: Distanza da parete 10cm (D=10cm)  
Installation: Distance from the wall 10cm (D=10cm)

Application NRC = 0.64



La prova è stata eseguita secondo le prescrizioni della norma UNI EN ISO 354  
Test executed according to UNI EN ISO 354



La prova è stata eseguita secondo le prescrizioni della norma UNI EN ISO 354  
Test executed according to UNI EN ISO 354

# SNOWSOUND-FIBER 6

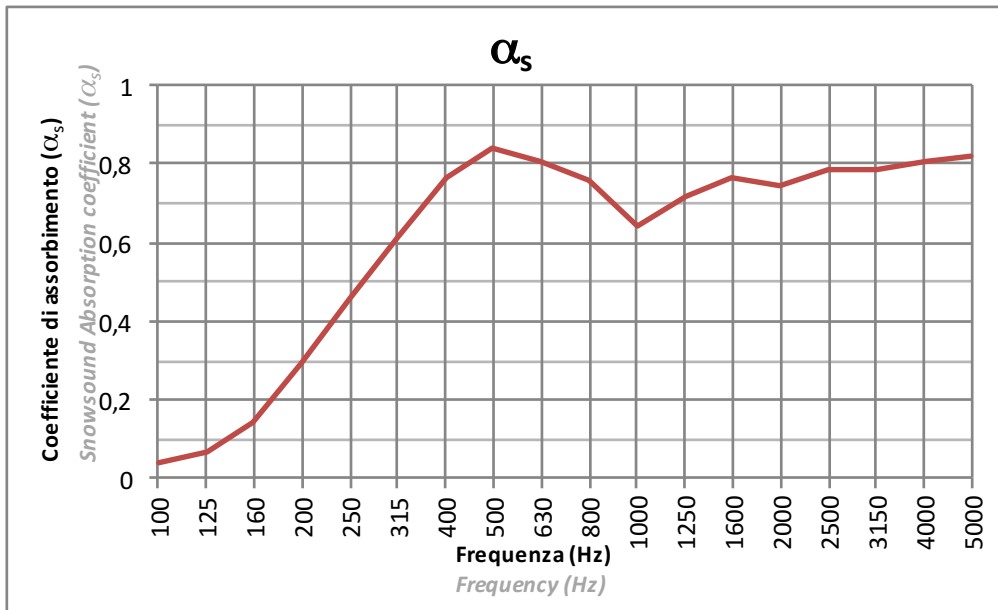
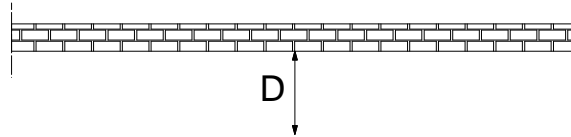
Tessuto: PLANARE

Fabric: FLAT

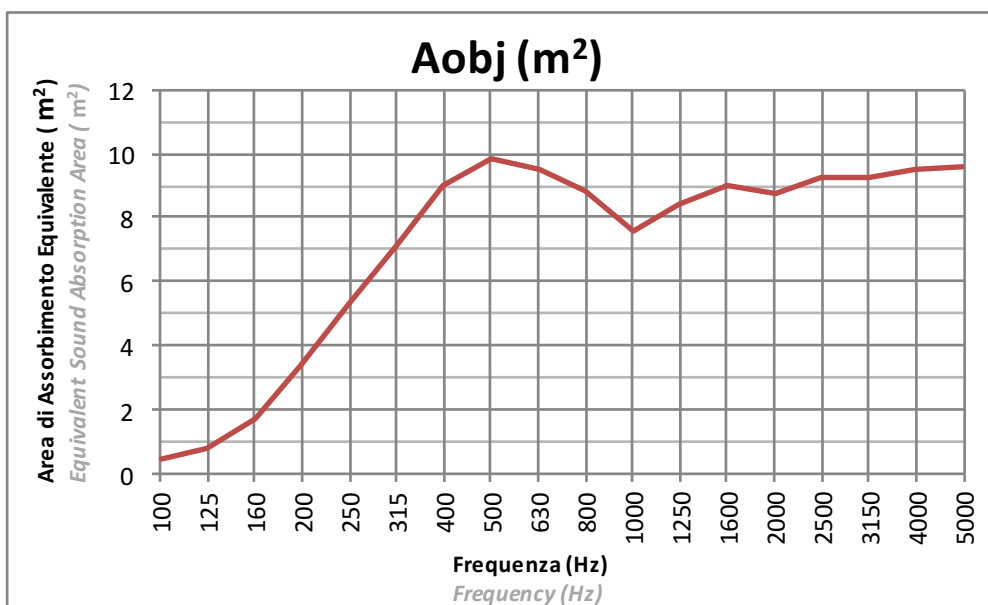
Installazione: Distanza da parete 20cm (D=20cm)

Installation: Distance from the wall 20cm (D=20cm)

Application NRC = 0.67



La prova è stata eseguita secondo le prescrizioni della norma UNI EN ISO 354  
Test executed according to UNI EN ISO 354



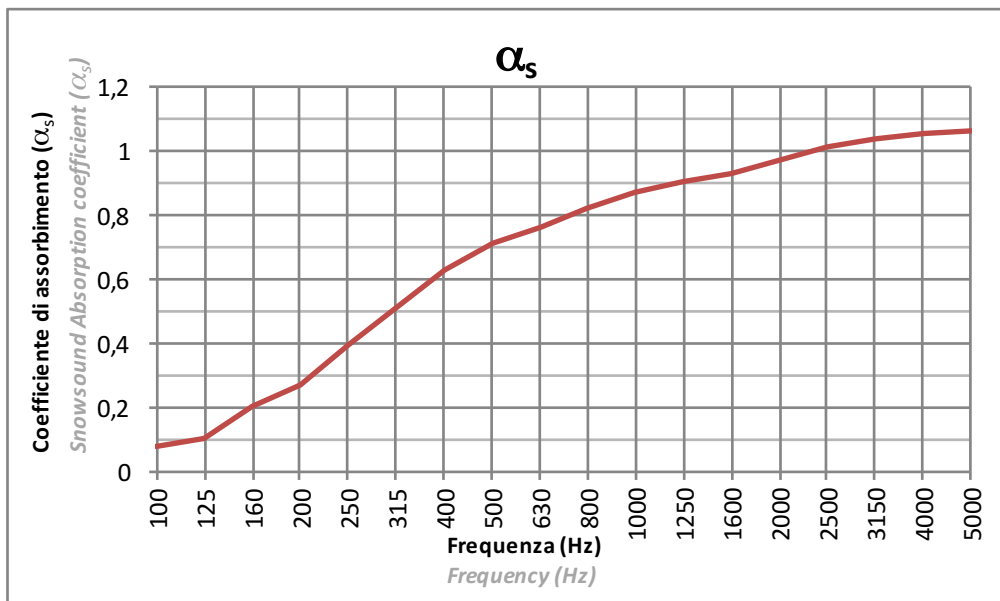
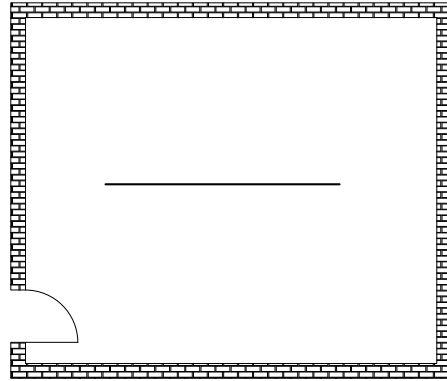
La prova è stata eseguita secondo le prescrizioni della norma UNI EN ISO 354  
Test executed according to UNI EN ISO 354

# SNOWSOUND-FIBER 6

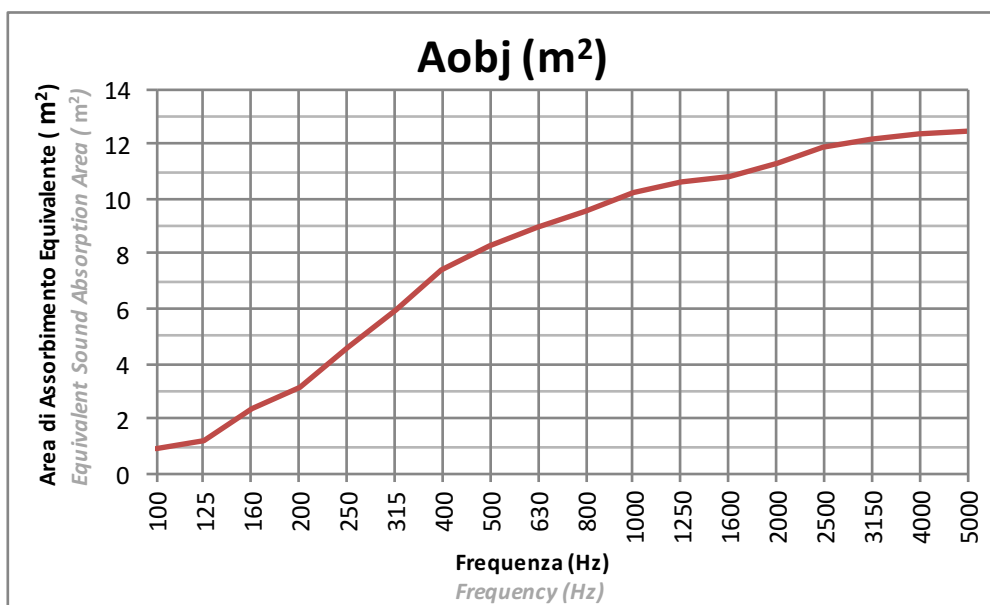
Tessuto: PLANARE  
Fabric: FLAT

Installazione: CENTRO STANZA  
Installation: CENTER OF THE ROOM

Application NRC = 0.74



Procedura Sperimentale  
Experimental Procedure



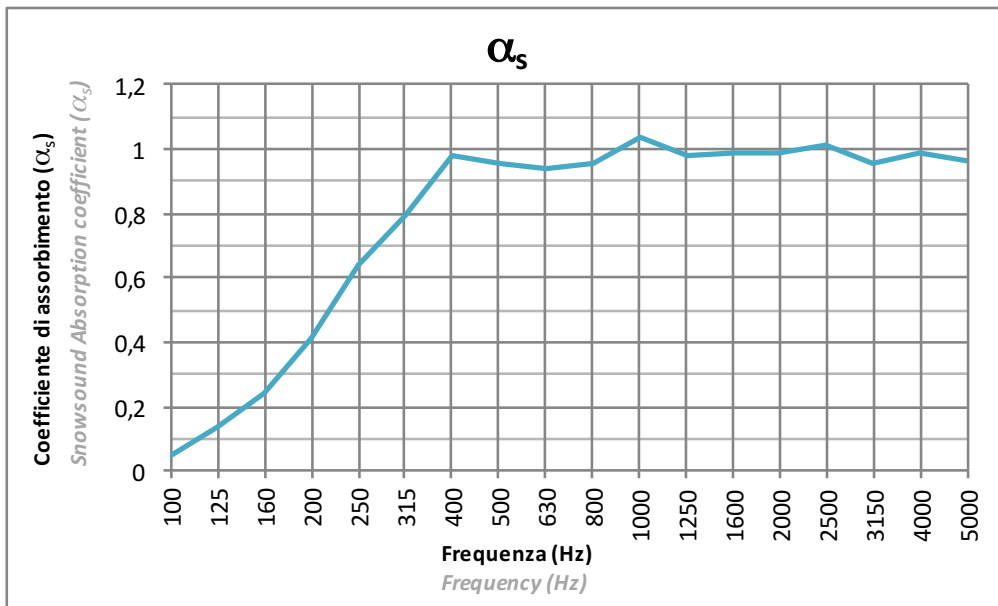
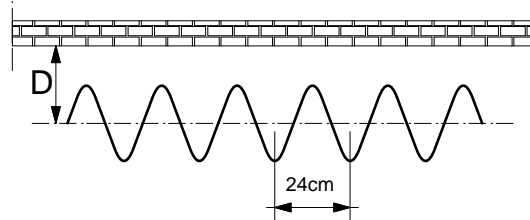
La prova è stata eseguita secondo le prescrizioni della norma UNI EN ISO 354  
Test executed according to UNI EN ISO 354

# SNOWSOUND-FIBER 6

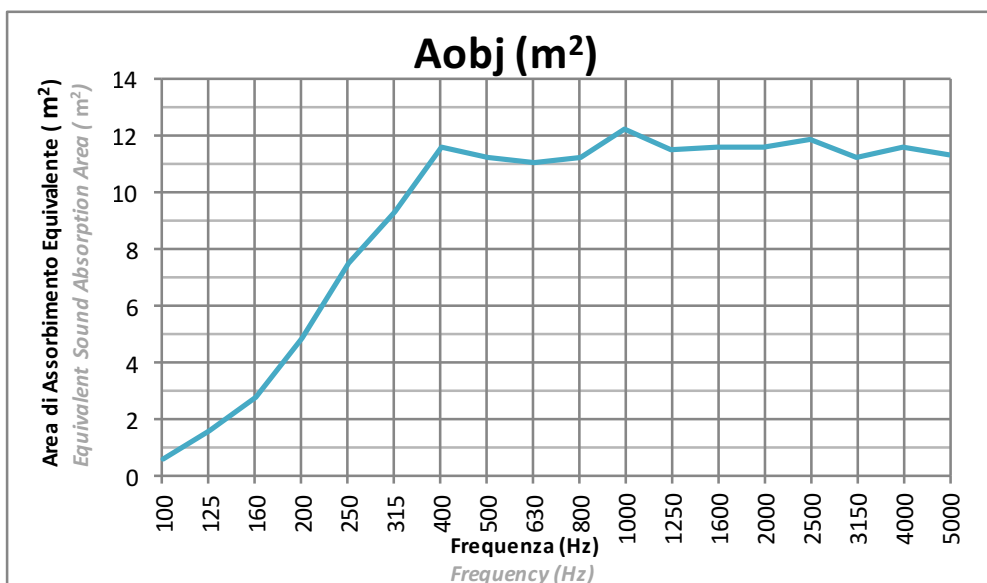
Tessuto: ONDULATO a passo 24cm  
Fabric: WAVY (24cm pace)

Installazione: Distanza dall'asse da parete 20cm (D=20cm)  
Installation: Wall to axis distance 20cm (D=20cm)

Application NRC = 0.91



La prova è stata eseguita secondo le prescrizioni della norma UNI EN ISO 354  
Test executed according to UNI EN ISO 354



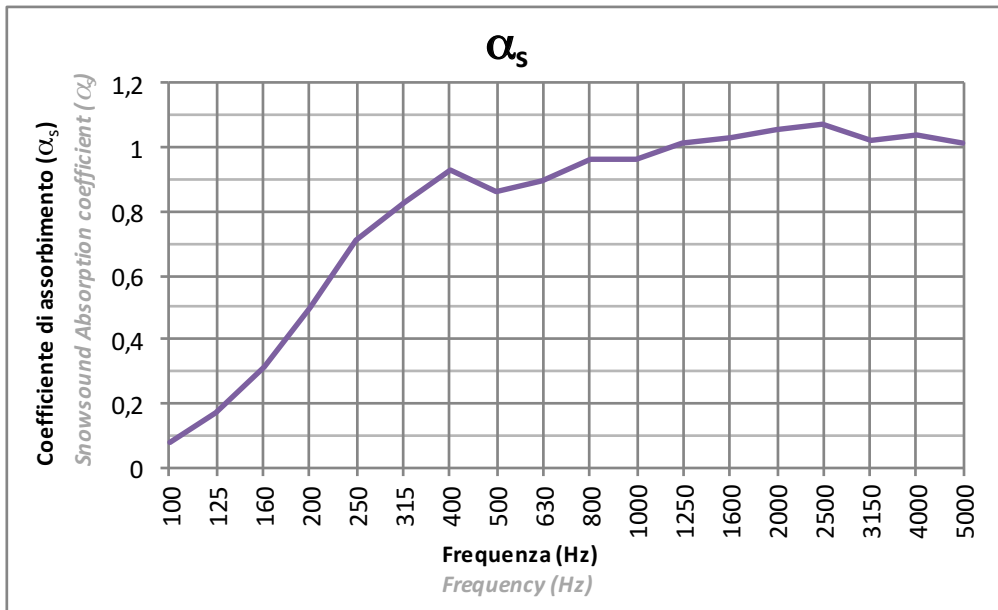
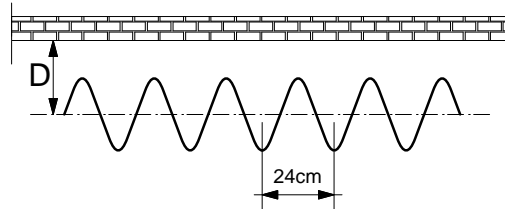
La prova è stata eseguita secondo le prescrizioni della norma UNI EN ISO 354  
Test executed according to UNI EN ISO 354

# SNOWSOUND-FIBER 6

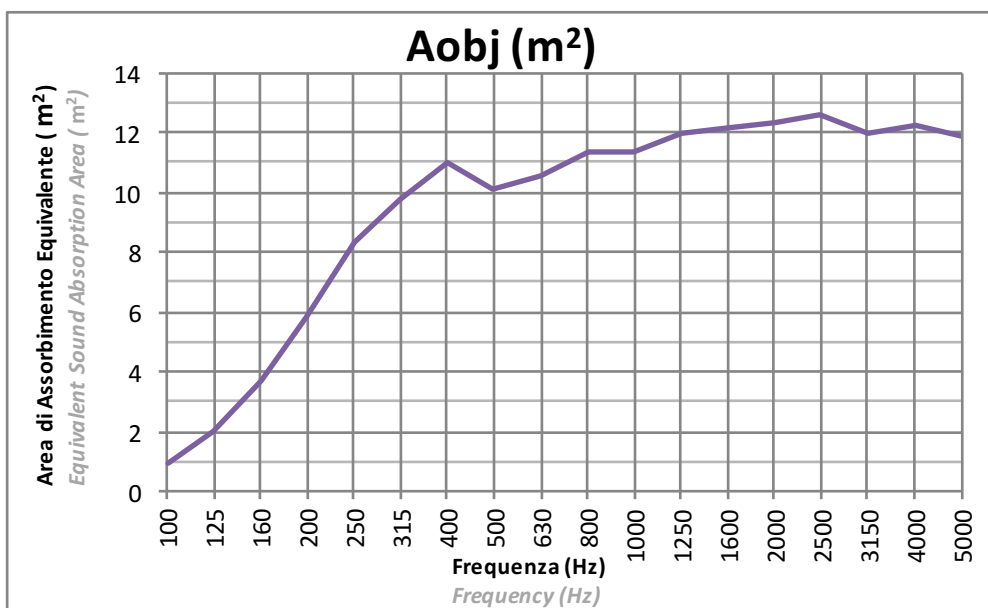
Tessuto: ONDULATO a passo 24cm  
Fabric: WAVY (24cm pace)

Installazione: Distanza dall'asse da parete 30cm (D=30cm)  
Installation: Wall to axis distance 30cm (D=30cm)

Application NRC = 0.91



La prova è stata eseguita secondo le prescrizioni della norma UNI EN ISO 354  
Test executed according to UNI EN ISO 354



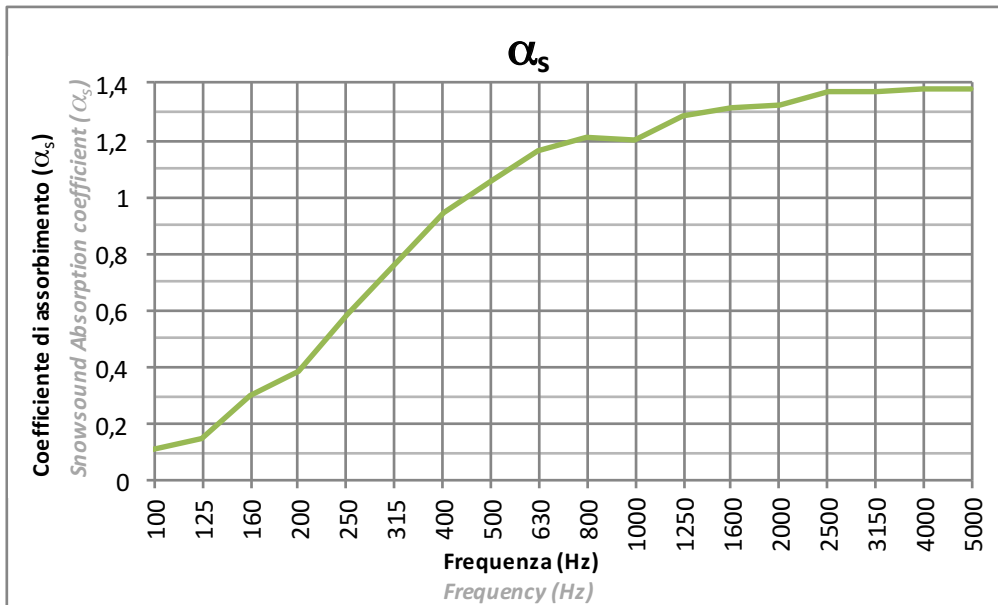
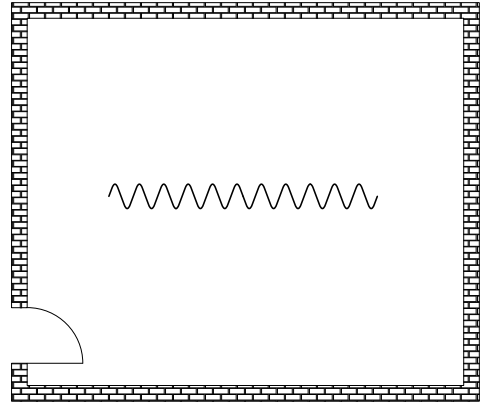
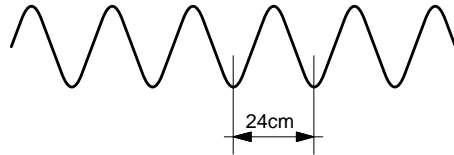
La prova è stata eseguita secondo le prescrizioni della norma UNI EN ISO 354  
Test executed according to UNI EN ISO 354

# SNOWSOUND-FIBER 6

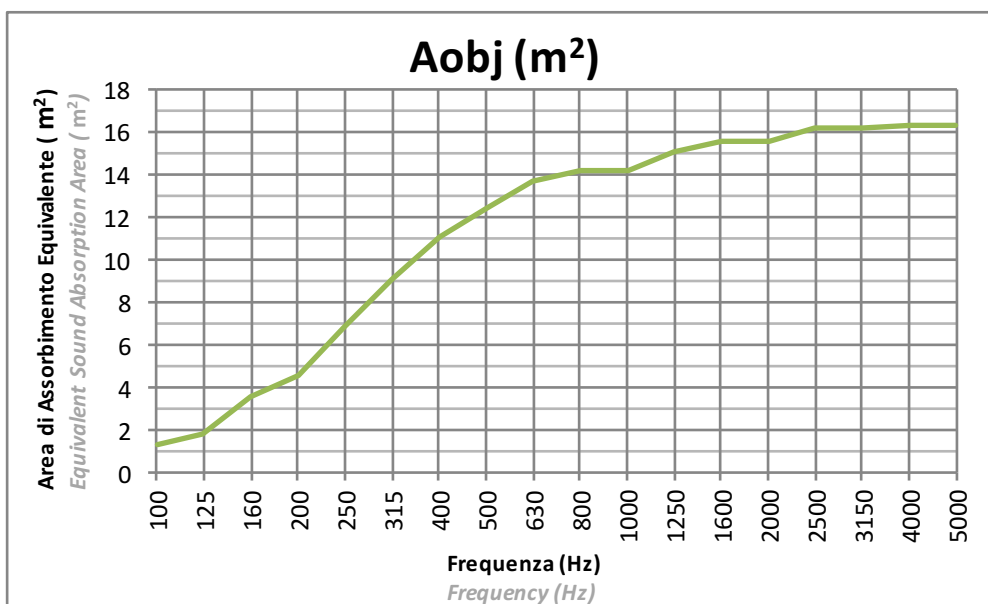
Tessuto: ONDULATO a passo 24cm  
Fabric: WAVY (24cm pace)

Installazione: CENTRO STANZA  
Installation: CENTER OF THE ROOM

Application NRC = 1.00



Procedura Sperimentale  
Experimental Procedure



La prova è stata eseguita secondo le prescrizioni della norma UNI EN ISO 354  
Test executed according to UNI EN ISO 354