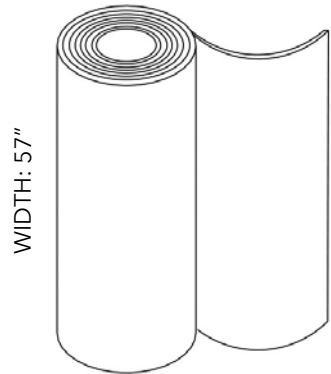


A close-up photograph of white fabric, likely a bedsheet or pillowcase, showing soft, natural folds and subtle shadows. The texture is fine and uniform. The lighting is soft, creating a clean and minimalist aesthetic.

SNOWSOUND® FIBER TEXTILES





FABRIC ROLL SIZE:

27.3 YARDS

8.7 YARDS

PHYSICAL PROPERTIES

Content: 100% Fire Resistant, Acoustic Sound Absorbing Polyester Fibers with Patented Snowsound Technology

Backing: Unbacked

Width: 57" // 145 cm (tolerance + 0 - 3 cm)

Weight: 13.6 oz per square yard / 21.5 oz per linear yard

Thickness: 1.6 mm

ACOUSTIC PERFORMANCE AND NOISE REDUCTION RATING

Absorption Coefficient and NRC:

Class A- NRC between 0.63 -1.0 depending on installation. Please refer to on-line technical sheets for details.

PERFORMANCE

Flame Resistance:

Passes NFPA 701 // NFPA 260 // CAL. TB 117 // UL 723 Class A // ASTM E 84 Class A

Environment:

100% Recyclable and GREENGUARD GOLD Certified

Abrasion Resistance:

25,000 rubs /cycles (tested according to Martindale Method)

Colorfastness to Light:

Grade 6/7 - "Excellent" (Passes AATCC 16 / ISO 105-B02:2014)

Colorfastness to Wet and Dry Crocking:

Wet & Dry - Grade 5 (Passes AATCC 8 / ISO 105-X12: 2016)

Propensity to Surface Fuzzing and Pilling:

Grade 5 - "no change" (Passes ISO 12945-2:2002)

Washing and Maintenance:

Normal machine washing up to 86 degrees Fahrenheit. Ironing on low heat acceptable. Dry cleaning is acceptable (any solvent except Trichloroethylene). Do not tumble dry.



Dove Coffee (8.7 yd) 7F8-8-800 FRONT

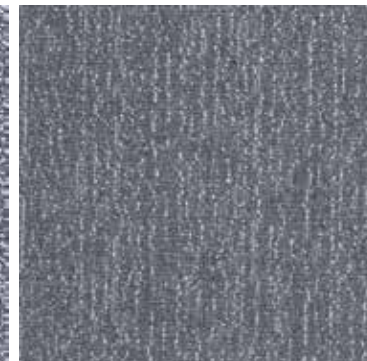


BACK

Dove Coffee (27.3 yd) 7F8-25-800

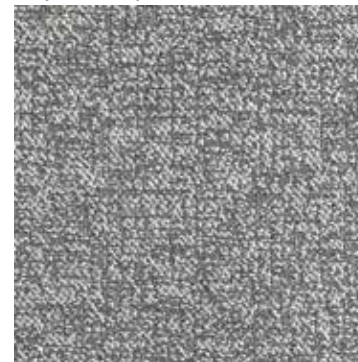


Gray Ice (8.7 yd) 7F8-8-801 FRONT

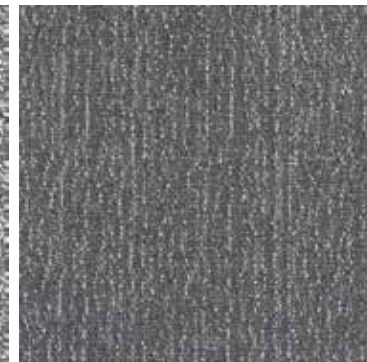


BACK

Gray Ice (27.3 yd) 7F8-25-801



Gray Beige (8.7 yd) 7F8-8-802 FRONT



BACK

Gray Beige (27.3 yd) 7F8-25-802